

Camp Misty Mountain

490 Lake Marvin Road NE, Armuchee GA 30105
phone (706) 629-1030 fax (706) 629-2676

Directions to Misty Mountain from I-75 Exit 306

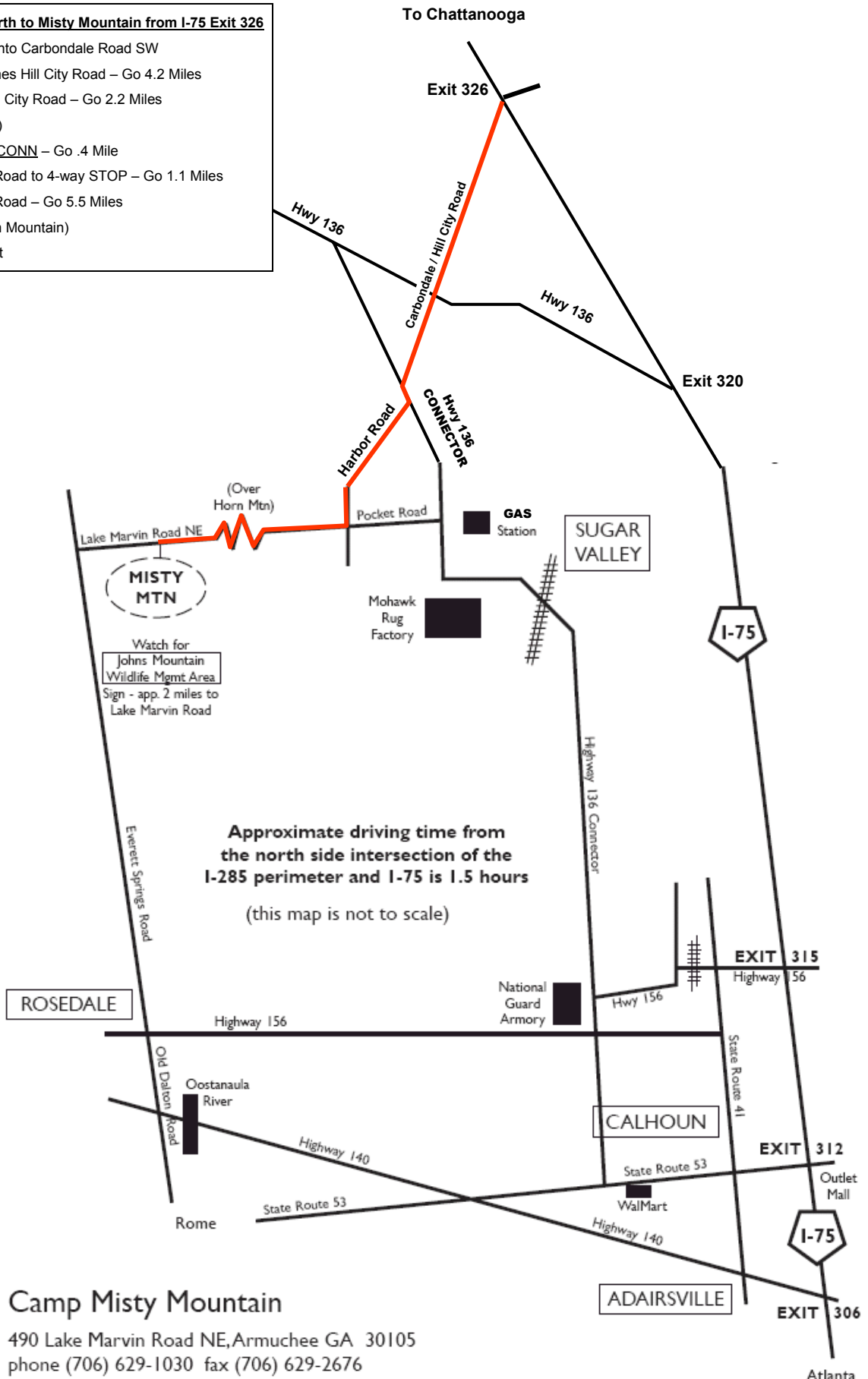
Exit 306 - Adairsville Hwy. 140
Travel west toward Armuchee (northbound turn left, southbound turn right)
Travel 12 miles, turn right on Old Dalton Road, just past bridge over Oostanaula River
Travel 4 miles to 2-way stop, go forward through Rosedale,
Old Dalton Road turns into Everett Springs Road
Travel 12 miles, turn right on Lake Marvin Road NE
Travel 12 miles, turn right on Lake Marvin Road NE
(Watch for the Johns Mountain Wildlife Management Area sign
- from this sign, Lake Marvin Rd is approximately 2 miles)
Travel 1 mile, camp entrance is on right

Directions to Misty Mountain from I-75 Exit 315

Exit 315 - Redbud/Calhoun Hwy. 156
Travel west toward Calhoun (northbound turn left, southbound turn right)
Travel 2 miles, cross RR tracks, to STOP sign,
turn left onto 156
Travel .5 mile to STOP sign, turn right onto 136 Conn.
Travel 5 miles, cross RR tracks, turn left onto Pocket Road
just past Mohawk Rug, across from GAS station
Travel 1 mile to 4-way STOP, go forward & continue over
mountain 5.5 miles
Camp entrance is on left

Directions from the North to Misty Mountain from I-75 Exit 326

EXIT 326 – Turn Right onto Carbondale Road SW
Carbondale Road becomes Hill City Road – Go 4.2 Miles
Bear Right to stay on Hill City Road – Go 2.2 Miles
(You will Cross Hwy 136)
Turn Left onto Hwy 136 CONN – Go .4 Mile
Turn Right onto Harbor Road to 4-way STOP – Go 1.1 Miles
Turn Right onto Pocket Road – Go 5.5 Miles
(You will cross over Horn Mountain)
Camp entrance is on Left



Camp Misty Mountain

490 Lake Marvin Road NE, Armuchee GA 30105
phone (706) 629-1030 fax (706) 629-2676